

FG Wilson Diesel Generators



P550-3

550kVA Diesel Generator
3 Phase - Perkins Powered

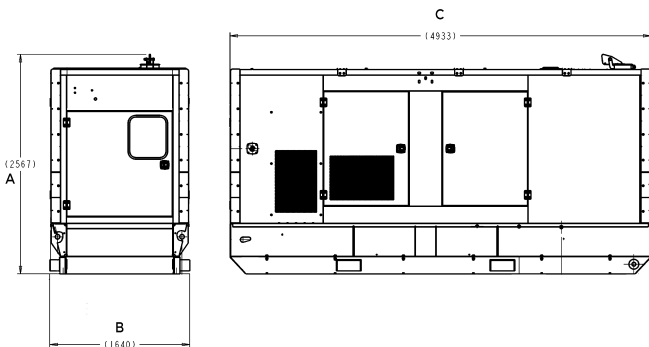


Prime output:	500kVA
Standby output:	550kVA
Engine:	Perkins
Engine model:	2506A-E15TAG2
Alternator:	Leroy Somer
Control panel:	FG100
Circuit breaker type:	3 pole MCCB
Fuel consumption prime:	97.2 L/hour
No. of cylinders:	6
Recommended fuel:	Class A2 diesel
Voltage:	220-415 volts
Emissions/fuel strategy:	Fuel optimised
ComAp IG 200 controller	



Dimension and Weights

A:	2567mm
B:	1640mm
C:	4933mm
Weight:	5071kg
Fuel Capacity:	873L

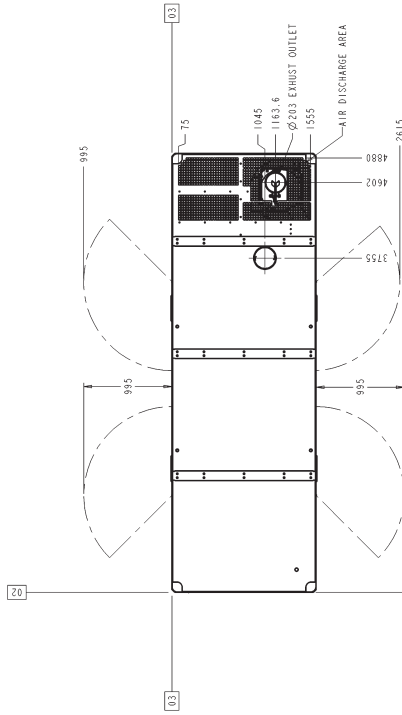
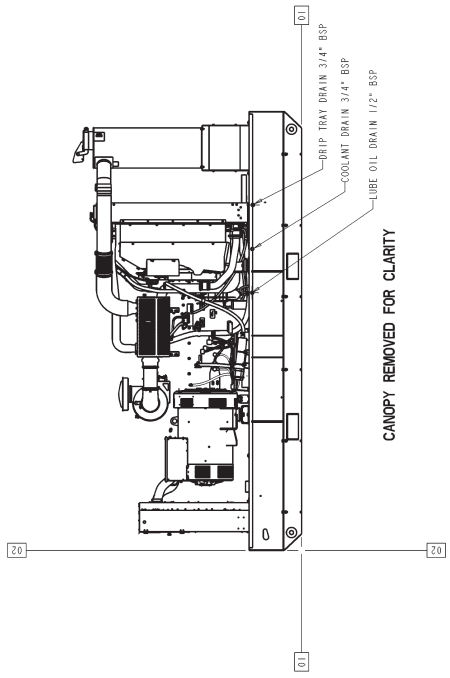


Warranty

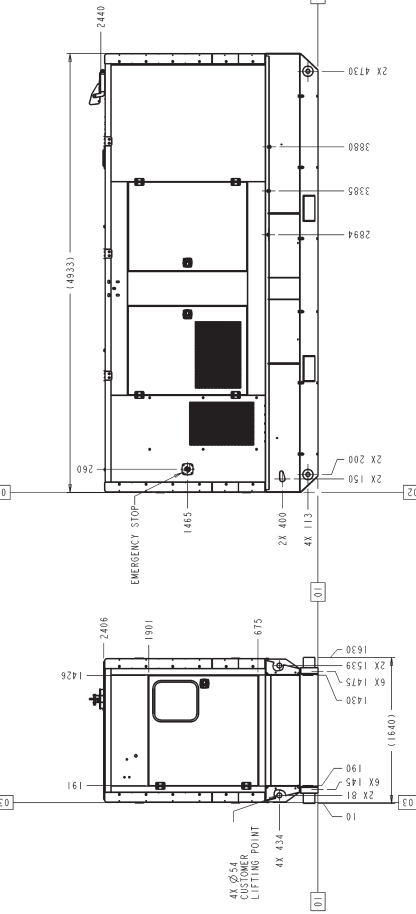
12 months warranty from start up for prime application and 24 months from start up for standby application up to 500 hours.

ENGINE / A/T OPTION	DUAL WALL MASS (KG)	CENTRE OF GRAVITY FROM U.C.
250E / F6L0020	OIL & WATER 5740	2311

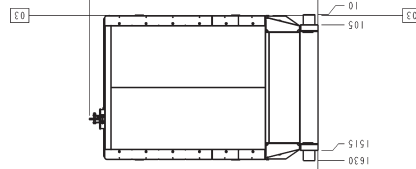
TANK CAPACITY (L)	
GROSS FILLABLE - USEABLE	
DUAL WALL TANK BASE	961 913 845
NOTE: DESIGN PRESSURE HEAD 3.7M	



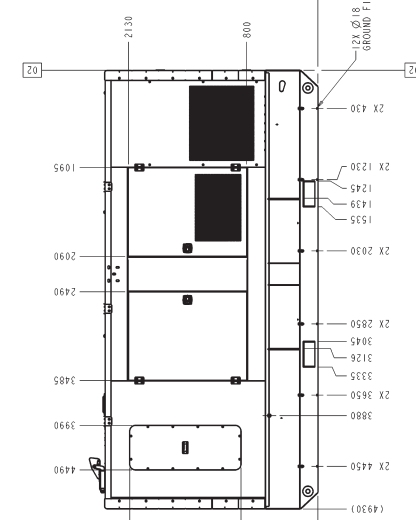
TOP VIEW



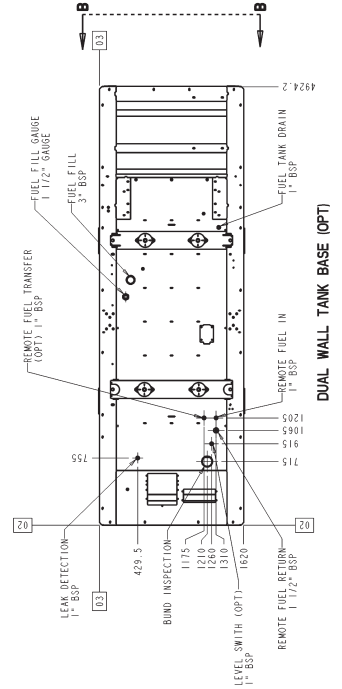
REAR VIEW



FRONT VIEW



LEFT SIDE OF GENSET



RIGHT SIDE VIEW

DESIGN	DESIGNED BY	1ES167A	INT' PROOF
DRAWING	DRAWN BY	1EC22EP	DRW MARKING
CHECKED BY	CHECKED BY	1EC032	CONFIDENTIALITY
INTERPRETATION	INTERPRETATION	1EC032	INTERPRETATION
INSTR. & TOL.	INSTR. & TOL.	1EC001	INSTR. & TOL.
PRODUCTION	PRODUCTION	1ES167A	INT' PROOF
ISSUES	ISSUES		
NO. OF ISSUES	NO. OF ISSUES		
DATE	DATE		
PROJECT	PROJECT		
DESCRIPTION	DESCRIPTION		
DATE	DATE		
BY	BY		
CHECKED BY	CHECKED BY		
DATE	DATE		