

# BLUE DIAMOND

## MACHINERY

### Dewatering Pumps





*What hurts you today...*

**...makes you stronger tomorrow.**

All Impulse pumps are powered by:



Supplied by:

**BLUE DIAMOND**  
MACHINERY

1300 998 647 • [bluedm.com.au](http://bluedm.com.au)

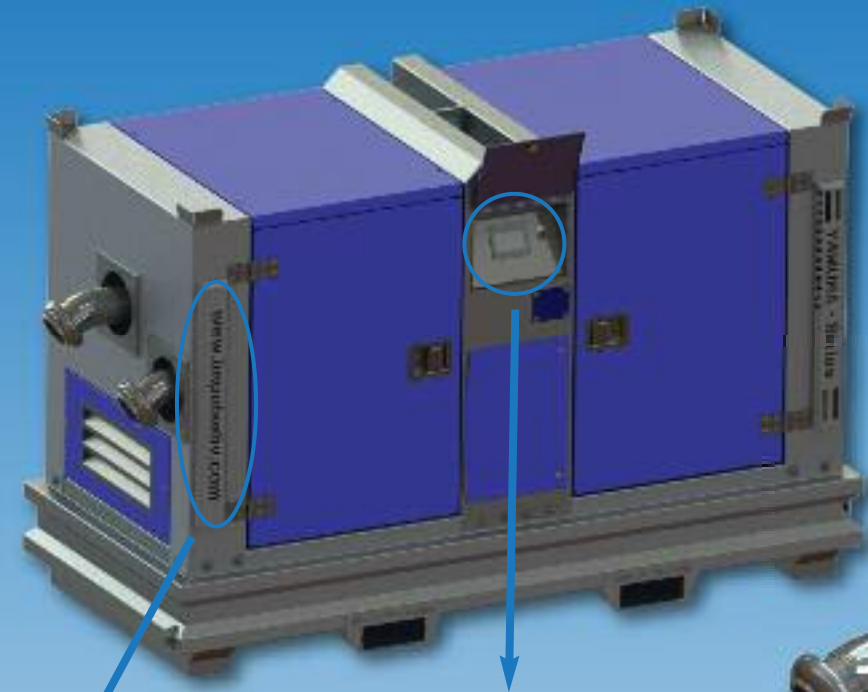
**impulse**<sup>®</sup>  
Dewatering Technologies

**YAMUNA - Series**



*Impossible to live without water..*

Impulse Pumps BV Arendsenweg 9 7021 PC Zelhem The Netherlands  
Tel. +31 (0) 314 64 12 88 [info@impulsebv.com](mailto:info@impulsebv.com) [www.impulsebv.com](http://www.impulsebv.com)



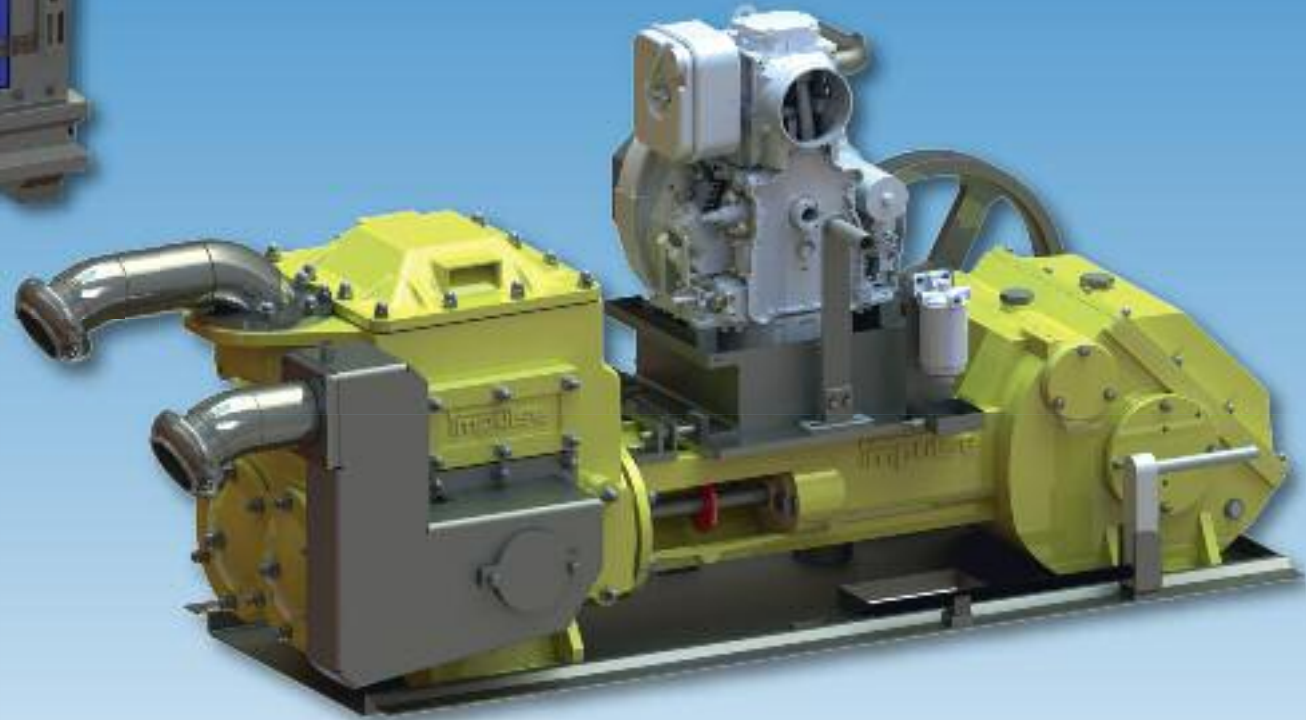
company logo

### Options:

- PLC controlled motormanagement
- Vacuum control fuel saving module i.c.w. PLC controller
- GPS location determination
- Telemetric reading and control on distance
- Protection bars on canopy with own company logo
- Panels painted in any single (company) RAL colour

### Main specifications canopy:

Dimensions (LxWxH) : 225 x 105 x 140 cm  
 Weight : 1.985 kg  
 Fuel tank : 230 liter  
 Max. Capacity : 90 m3/h  
 Engine : Hatz 1D81Z diesel engine  
 Fuel consumption : 0,8 liter / hour



### Pump Performance:

	IP-145	IP-160	IP-175	
Cylinder diameter	145	160	175	mm.
Engine power	7.5	5.5	7.5	Kw
Capacity	48	60	90	m3/h
Head	65	26	22	mwc.
Vacuum	9.5	9.5	9.5	mtr.

*Impossible to live without water..*

## Reciprocated piston pump built in galvanized stacking frame with:

- Hatz 1D90 ZE fixed speed diesel engine
- Control box with fuel gauge, hour counter and engine warning light
- Stone box



*Impossible to live without water..*